



# Our Savior

LUTHERAN CHURCH AND SCHOOL

2900 Burton Street SE + Grand Rapids, MI 49546 + 616.949.0710 + www.oursavior-gr.org

## Praise God for our Brothers and Sisters in Siberia!

Isaiah 55:10-11 "For as the rain comes down, and the snow from heaven, And do not return there, But water the earth, And make it bring forth and bud, That it may give seed to the sower And bread to the eater, So shall My word be that goes forth from My mouth; It shall not return to Me void, But it shall accomplish what I please, And it shall prosper in the thing for which I sent it." (NKJV)

Our Lord's word is able to bear fruit even in the most unlikely places. Take Siberia for example.

Since 2001 our congregation has supported Lutheran mission work in Siberia and the former Soviet Union through what became the Siberian Lutheran Mission Society (SLMS), the Siberian Evangelical Lutheran Church (SELC), and the Lutheran Heritage Foundation. **On Monday, January 11<sup>th</sup>, at 6:00 pm, Bishop Lytkin of the SELC will join us for a soup supper style dinner. He'll give a presentation on the Church's work in Siberia. A short Vespers service will follow.**

The SLMS gives the history of Lutheranism in Russia:

Lutheranism came to Russia just after the Reformation. The first church building in Moscow was dedicated in 1576. From this time the Lutheran Church in Russia steadily grew. At the invitation of the Tsarina, Catherine II, many Germans came to Russia to establish farms, businesses and communities. The Reformation spread through the German communities of the Baltic nations and to Finland. These nations were absorbed into the Russian Empire as it expanded. At one time, the Lutheran church was the second largest Christian Communion after the Russian Orthodox Church.

All this changed abruptly with the coming of Lenin and the 1917 Russian Revolution. Under Stalin, all of Russian Christianity suffered. Stalin ruthlessly persecuted these immigrant communities. During the 1920's Lutheran churches were closed and by the early 1930's all Lutheran pastors had been exiled to gulags in Siberia. Virtually all of them did not survive the imprisonment or may have been sentenced to death at their trials. We will never know the horrific details. As a result, the millions of Lutherans in Russia were without trained leadership for many decades.

During the early 1990s, Dr. Wallace Schulz, then 2nd Vice President of the LCMS, organized a series of theological seminars on the campuses of the Fort Wayne and St. Louis seminaries. Among more than 200 visitors from the nations of the former Soviet Union were



*Dinner with Bishop Lytkin of Siberia  
Monday, January  
11, 6:00 PM*

Pastor Vsevolod Lytkin and several young members of what became the Siberian Evangelical Lutheran Church.

In 1995 Pastor Lytkin asked Dr. Schulz for help in training pastors and deacons in Siberia. The Russian Project was established in answer to his appeal. Since 1996, the Russian Project has trained nearly 40 men for the ministry. The majority is now serving as missionary pastors in Russia as well as in Kazakhstan, Ukraine, Belarus, Lithuania and Latvia. Several women also studied at Concordia Theological Seminary in Fort Wayne and now serve as translators and church musicians.

It became clear that it would make sense to train theological students within Russia. The Lutheran Theological Seminary has been established in Novosibirsk. There are currently over twenty students at the Lutheran Theological Seminary in Novosibirsk, where an LCMS pastor, Dr. Alan Ludwig, is the senior professor. In addition, LCMS pastors and scholars teach intensive seminars. SELC currently has 13 ordained pastors and deacons who serve congregations and mission stations across six time zones in Siberia.

Socially, there is a huge divide between rich and poor. It is believed between 30 and 40 million Russians live below the poverty line—\$30 of income per month—with unemployment approaching 25 percent, certainly greater in rural villages and remote cities. The spiritual bankruptcy in Russia is staggering. The people without teachers of righteousness, without the sacred gifts of God that bring Christ to despairing men; they long for hope beyond the earthly crosses they bear.

May the Lord continue to allow His Word to bear fruit in Siberia and in our land.

In Christ,  
Pastor Fleming

## epiphany

*The revelation that Christ's coming is for  
the gentiles as well.*

**Epiphany Divine Service,**  
Wednesday, January 6, 7:00 PM

## OSLC January Meeting Schedule

School Board, Tuesday, January 5, 7:00 PM  
Elders, Wednesday, January 13, 7:00 PM  
Church Council, Tuesday, January 12, 7:00 PM  
Voters' Meeting Tuesday, January 19, at 7:00 PM  
**Everyone is encouraged to attend the Voters' Meeting!**

## West Michigan Lutheran High

Check out the West Michigan Lutheran High School website at [www.wmlhs.org](http://www.wmlhs.org) and follow the links for more information on all things WMLHS!

## Our Savior Senior Saints

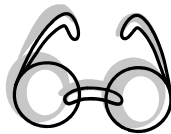
### January Joy at Noon!

Senior Saints are meeting on January 13th in the fellowship hall. Bring your own lunch and dessert will be provided.

The seniors received thank you notes from the Sunday School classes for the treats that were handed out after the Vespers service on December 6. Also, the VA home in Grand Rapids appreciated getting lots of new white sox!

## Donate Your Old Glasses!

While you're cleaning out the drawers and closets for the WIF garage sale, when you find old glasses, put them in the basket in the Fellowship Hall.



## Lutheran Radio and Television

- \* The Lutheran Hour. 105.7 FM at 6:30 AM and 1680 AM at noon.
- \* Issues, Etc. You can listen to what you want when you want at [www.issuesetc.org](http://www.issuesetc.org).
- \* Worship for Shut-Ins WTLJ-TV 54 in Grand Rapids, Sundays at 11:30 AM . Also on DirecTV channel 377, Comcast channel 21.

## Coffee and Snack Time

**VOLUNTEERS ALWAYS NEEDED!** We need volunteers every week who are willing to either set up the gym on Saturday night, or provide and set up the snacks and turn on the coffee pot on Sunday morning. **A sign up sheet is on the counter in the office at school. Many Thanks!** to all those who take down chairs and tables each week!

## Fort Wayne Seminary Ingathering

### It's That Time of Year Again!

It has been the custom at Our Savior Church to support the Fort Wayne Seminary Food and Clothing Co-ops by bringing food, paper products, personal care items and good used clothing to church the first three months of each new year. This just takes a few of your dollars along with your effort to use coupons and store specials to get some amazing deals.



Seminary families depend on the food pantry to eat. The pantry provides almost all of their grocery needs since they now feature perishable items.. This is a tremendous help to them and we can make it happen. Please add an item or two to your weekly grocery list and bring them to church each Sunday. Please put them on the counter in the fellowship hall. See suggestions below.

### THANKS for your help!

#### Food Co-op Wish List:

- ◆ Monetary Donations
- ◆ Cereal
- ◆ Canned fruits, vegetables and soups
- ◆ Crackers
- ◆ Peanut Butter and Jelly
- ◆ Pasta, rice and sauces
- ◆ Juices
- ◆ Spaghetti sauces and canned tomato products
- ◆ Canned meat and tuna
- ◆ Baking needs: flour, sugar, soda nd spices
- ◆ Coffee, tea and drink mixes
- ◆ Personal hygiene products
- ◆ Baby food and baby care products
- ◆ Over-the-counted medications
- ◆ Paper products
- ◆ Cleaning products

#### Clothing Co-op Wish List:

- ◆ New baby items
- ◆ New socks and underwear
- ◆ Clothing, furniture and household items \*

\*Items should be like new or gently used and clean. A rule of thumb: Would you like to see your pastor or his family wearing it? Would you like to see it in your pastor's home?

## Women's Bible Study

Women's Bible Study will resume on January 14 at 9:30 a.m. This nine week study will focus on Luke Part II. We invite all women to join us for this time of study and fellowship. If you are new to the group please call Norma. Study guides for the "regulars" will be available in the church narthex. Please sign out a copy.

## Mite Box UPDATE

### January Anniversaries

We're sorry, this information is not available online

### January Birthdays

We're sorry, this information is not available online

If your name does not appear as it should, please contact the Church secretary at 949-0710 or churchsecretary@oursavior-gr.org

### Alms Fund Envelopes

On the bulletin board ledge there are envelopes available for contributions to Our Savior Church's Alms Fund. This fund is used to help congregation members in financial need. These envelopes can be deposited in the offering plate, simply write your regular offering envelope number on the outside of the envelope.

### Our Savior Women

Information is in your mailbox on how you can participate in the gift for the Seminary family's new daughter, due in January.

### Knit-Wits

Knit Wits will meet on the first Monday of the month 7:30 PM in the fellowship hall. All are welcome, experienced or beginners! If you have questions, please call Deb or Jo.



### Nursery Help is Still Needed

Many of our nursery helpers are going off to college and we need additional helpers in the nursery during the 11:00 AM service. Please contact Michelle Rader if you are able and willing to help. Call the office 949-0710 or email: churchsecretary@oursavior-gr.org

### Homebound Members

We're sorry, this information is not available online

A card, note, or word of encouragement can be a wonderful gift for those who cannot worship with us on a regular basis.

### Mighty Mites at Work!



Kyrgyzstan Locals Trained for Evangelism: Kyrgyzstan, a poor mountainous country where 75% of the population is Muslim, has a small but growing presence. With recent political turmoil in the region, there has been a reduction in political and religious freedom resulting in obstacles for LCMS mission work. In spite of the challenges, LCMS missionaries and partners have continued to bring the Gospel to the people of Kyrgyzstan. A grant of \$100,000 equips the local church servants to proclaim the Gospel to a people still hurting and struggling to gain independence from the former Soviet Union.

Remember to empty your mite box each month into the larger one in the fellowship hall! Those coins are important to achieve mighty mission work!

### Women in Fellowship

#### December 8 Meeting Recap

We learned that the Blind Ministry leaders, needed dishes and sheets and authorized Anita to buy them. We also discussed ways to make it possible for all OS women to participate in a gift card for the Seminary family's new baby. We approved and wrapped the gown and robe that Mary had purchased for 'mom' as a personal gift to her from WIF.

Eleven canisters were packed with cookies for shut-ins. A card with a hand written Christmas greeting was included with each canister.

#### January 4 7:30 PM

##### Knit Wits in the Fellowship Hall

Knitters will resume meeting once a month on the first Monday of the month. Questions? – call Deb or Jo.

#### January 6 9:00 AM to 2:00 PM

##### Quilting Bee – Church Fellowship Hall

Bring a sandwich, if you're staying through lunch. For more information, call Judy.

#### January 13 9:30 to 11:30 AM

##### Women in Fellowship – regular meeting

Celebrating a baby – a baby shower without presents. Just bring your donation to the gift card that will be sent to the Seminary family. ALSO, bring a picture of yourself as a little girl.

#### February 9 9:30 to 11:30 AM

##### Women in Fellowship – regular meeting

Collecting and packing items for the college student "Goodie Boxes".

#### February 27 - Saturday

##### Women's Winter Retreat – Messiah Lutheran Church in Grand Rapids

Speaker: Cynthia Kahn from POBLO

## *Seminar with Dr. Paul Maier*

On January 30, Rev. Dr. Paul L. Maier will give a presentation on "Martin Luther and the Reformation." Luther was not the first! Conditions in the medieval church cried out for reform. Though Luther stood alone at Worms in 1521, the "Protestant" movement spread through northern Europe and beyond. Come join us at Messiah Lutheran Church, 2727 Five Mile Rd. NE, Grand Rapids. Doors open at 8:30 AM for registration, coffee and rolls. Tickets are \$15 (\$10 for students 18 and under), which includes lunch. Please make reservations for the event by phoning the church (616-363-2553), or sending an email to [messiahgr@messiahgr.org](mailto:messiahgr@messiahgr.org) Registration deadline is Sunday, January 24 or when full.

## *Changes of Address*

Please let the office know if you have a change of address, phone number or email address. Please place information in Michelle Rader's mailbox or send it to the office email: [churchsecretary@oursavior-gr.org](mailto:churchsecretary@oursavior-gr.org) Thank you!

## *In Case of Inclement Weather*

It is Our Savior Church's policy NOT to cancel any scheduled service.

Our members live in many different areas and conditions can vary greatly from one area to another. We encourage members to stay home and stay safe if weather conditions appear to be too treacherous in their area to venture out.



## *Our Savior School News*

### **MEIJER COMMUNITY REWARDS, SPARTAN UPCS, CAMPBELL'S LABELS FOR EDUCATION, AND BOXTOPS FOR EDUCATION**

These are all collected year 'round! Collection boxes for all items are on the table in the narthex. Please call the office if you have questions about any of these programs. We APPRECIATE your support!

Chapel is every Wednesday at 8:35. Please join us!

### **📅 DATES TO REMEMBER**

January 18 – No School Records Day

January 21 – Our Savior School Learning Fair

## *Serving in the Armed Forces*

We're sorry, this information is not available online

**Parents and family members:** Please send addresses for service personnel to Michelle so that it can be published in the newsletter. Send to: [churchsecretary@oursavior-gr.org](mailto:churchsecretary@oursavior-gr.org) THANK YOU!



# January 2010

## Our Savior Lutheran Church and School



Sunday	Monday	Tuesday	Wednesday	Thursday	Friday	Saturday
					1	2  <b>Sunday's Readings:</b> <b>Genesis 46:1-7;</b> <b>1 Peter 4:12-19;</b> <b>Matthew 2:13-23</b>
<b>3</b> <b>The Second Sunday</b> <b>after Christmas</b>  8:00 AM Divine Service 9:40 AM Sunday School & Adult Bible Study 11:00 AM Divine Service	<b>4</b> 8:30 AM SCHOOL RESUMES 5:45 PM Junior High Catechism Class 6:15 PM Bell Choir 7:30 PM Adult Choir 7:30 PM Knit Wits	<b>5</b> 7:00 PM School Board	<b>6</b> <b>The Epiphany</b> <b>of Our Lord</b>  8:35 AM School Chapel 9:00 AM Quilt Group @ Church 7:00 PM Epiphany Divine Service	<b>7</b> 9:30 AM Women's Bible Study @ Church 7:00 PM Adult Catechism	<b>8</b>	<b>9</b>  <b>Sunday's Readings:</b> <b>Joshua 3:1-3,</b> <b>7-8,13-17</b> <b>1 Corinthians</b> <b>1:26-31</b> <b>Matthew 3:13-17</b>
<b>10</b> <b>The First Sunday</b> <b>after Epiphany</b> <b>The Baptism of Our</b> <b>Lord</b>  8:00 AM Divine Service 9:40 AM Blood Pressure Screenings 9:40 AM Sunday School & Adult Bible Study 11:00 AM Divine Service	<b>11</b> 6:00 PM Dinner w/ Bishop Lytkin of Siberia and Vespers	<b>12</b> 9:30 AM Women in Fellowship 7:00 PM Council  BVNA in Fellowship Hall	<b>13</b> 6:30 AM Men's Bible Study 8:35AM School Chapel 12:00 PM Senior Saints 6:00 PM Envirotrol - AEI Board Meeting 7:00 PM Elders	<b>14</b> 9:30 AM Women's Bible Study @ Church 3:45 PM Jr. Choir & Schola Cantorum @ Church 7:00 PM Adult Catechism 7:30 PM Knit Wits	<b>15</b>	<b>16</b>  <b>Sunday's Readings:</b> <b>Exodus 33:12-23</b> or <b>Amos 9:11-15;</b> <b>Ephesians 5:22-33</b> <b>John 2:1-11</b>
<b>17</b> <b>The Second Sunday</b> <b>after Epiphany</b>  8:00 AM Divine Service 9:40 AM Sunday School & Adult Bible Study 11:00 AM Divine Service	<b>18</b> <b>The Confession</b> <b>of St. Peter</b>  NO SCHOOL - Records Day  5:45 PM Junior High Catechism Class 6:15 PM Bell Choir 7:30 PM Adult Choir	<b>19</b> 7:00 PM Voters' Meeting	<b>20</b> 6:30 AM Men's Bible Study 8:35 AM School Chapel	<b>21</b> 9:30 AM Women's Bible Study 3:45 PM Jr. Choir and Schola @ Church 7:30 PM CCM in Fellowship Hall  Our Savior School Learning Fair	<b>22</b> 6:30 PM Family Bible Study	<b>23</b>  <b>Sunday's Readings:</b> <b>Exodus 34:29-35</b> or <b>Exodus 3:1-14</b> <b>2 Peter 1:16-21;</b> <b>Matthew 17:1-9</b>
<b>24</b> <b>The Transfiguration</b> <b>of Our Lord</b>  8:00 AM Divine Service 9:40 AM Sunday School & Adult Bible Study 9:40 AM Blood Pressure Screenings 11:00 AM Divine Service	<b>25</b> <b>The Conversion</b> <b>of St. Paul</b>  5:45 PM Junior High Catechism Class 6:15 PM Bell Choir 7:30 PM Adult Choir	<b>26</b> <b>St. Titus,</b> <b>Pastor and</b> <b>Confessor</b>  Deadline for Calendar and Newsletter Items	<b>27</b> 6:30 AM Men's Bible Study 8:35 AM School Chapel	<b>28</b> 9:30 AM Women's Bible Study @ Church 3:45 PM Jr. Choir & Schola Cantorum @ Church 7:00 PM Adult Catechism	<b>29</b>	<b>30</b>  <b>Sunday's Readings:</b> <b>Exodus 17:1-7</b> <b>1 Corinthians 9:24-10:5</b> <b>Matthew 20:1-16</b>  8:30 AM Dr. Paul Maier at Messiah
<b>31</b> <b>Septuagesima</b>  8:00 AM Divine Service 9:40 AM Sunday School & Adult Bible Study 11:00 AM Divine Service						"A" Boys' Tournament - HOME

**Office Phone: 949-0710**

**Fax: 975-7840**

**Church Building: 949-8890**